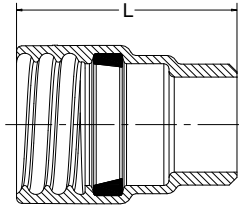


# Harco Fittings LLC Ductile Iron IPS Gasketed Fittings

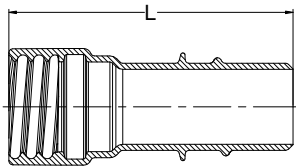
## DESIGN DATA

### ADAPTER (FSWL x MIPT)



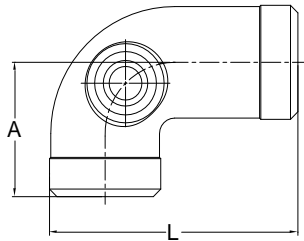
SIZE	PART #	L	WT (approx)
1½	873-006	5.0	2.3
2	873-008	5.3	3.7
2½	873-010	5.3	3.9

### SWIVEL EXTENSION (MSWL x FSWL)



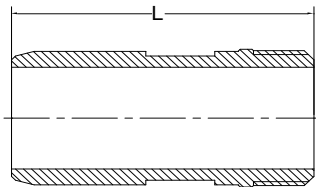
SIZE	PART #	L	WT (approx)
6	87106	9.5	5.6
12	87112	15.5	8.3
24	87124	22.0	22.0

### LATERAL 90° (MIPT x MIPT)



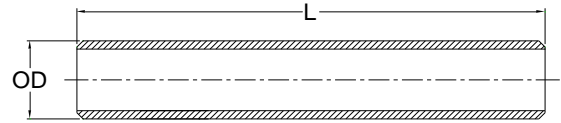
SIZE	PART #	A	L	WT (approx)
1½	80088	4.9	8.0	5.5
2	80188	4.7	8.0	6.8
2½	80288	4.5	8.0	7.6
3	80388	4.2	8.0	9.0

### SPIGOT x THREAD ADAPTER



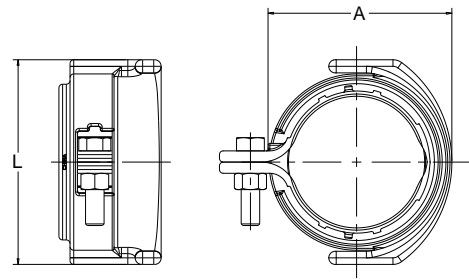
SIZE	PART #	L	WT (approx)
2 x 1½	874030806	6.6	3.0
2 x 2	874030808	6.1	3.0
2 x 2½	874030810	7.0	3.7

### DI NIPPLE



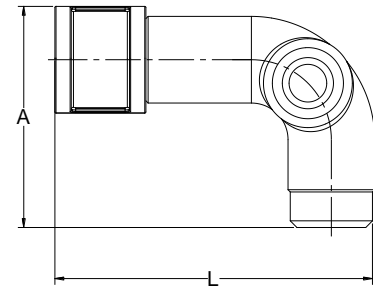
SIZE	PART #	OD	L	WT (approx)
1	87010	1.4	14.0	3
1¼	87012	1.8	14.0	4
1½	87015	2.0	14.0	6.4
2	87020	2.4	14.0	8.1
2½	87025	2.9	14.0	10.0
3	87030	3.6	14.0	12.5

### KNUCKLE RESTRAINT



SIZE	PART #	A	L	WT (approx)
1½	60-100-01	3.3	4.0	1.5
2	60-100-02	3.8	4.5	1.8
2½	60-100-25	4.5	5.2	2.4
3	60-100-03	5.2	5.8	3.5
4	60-100-04	6.2	6.9	4.4
6	60-100-06	8.8	11.0	9.2
8	60-100-08	10.9	13.2	11.0

### LATERAL 90° (FNPT x MNPT)



SIZE	PART #	A	L	WT (approx)
1½	80087	6.4	9.8	7
2	80187	6.2	9.8	9
2½	80287	6.0	9.8	11
3	80387	5.8	9.8	12

#### Notes:

- All lay lengths & weights are approximate and subject to change without notice
- Fabricated fitting configurations may vary

Call For Other Sizes, Configurations & Gasket Materials

#### Bell & Spigot Specification Note:

- 1½" – 12": Bells and Spigots are IPS size
- 14" – 18": **Bells and Spigots are Ductile Iron Pipe Size (DIPS) for AWWA C905 PVC Pipe or Ductile Iron Pipe**



**Harco Fittings LLC**

P.O. BOX 10335 • LYNCHBURG, VIRGINIA 24506 • 3721 COHEN PLACE • LYNCHBURG, VIRGINIA 24501  
 PHONE: (434) 845-7094 • FAX: (434) 845-8562 • E-MAIL: sales@harcofittings.com • WEB: www.harcofittings.com

DD\_DI\_20220408