

Patent
7150289



For PE (Polyethylene) Pipe

Part Number	Description
KT007C	3/4" PE x 1/2" FPT
KT007D	3/4" PE x 3/4" FPT
KT010C	1" PE x 1/2" FPT
KT010D	1" PE x 3/4" FPT
KT012C	1 1/4" PE x 1/2" FPT
KT012D	1 1/4" PE x 3/4" FPT
KT015C	1 1/2" PE x 1/2" FPT
KT015D	1 1/2" PE x 3/4" FPT
KT025C	25mm PE x 1/2" FPT
KT025D	25mm PE x 3/4" FPT
KT032C	32mm PE x 1/2" FPT
KT032D	32mm PE x 3/4" FPT

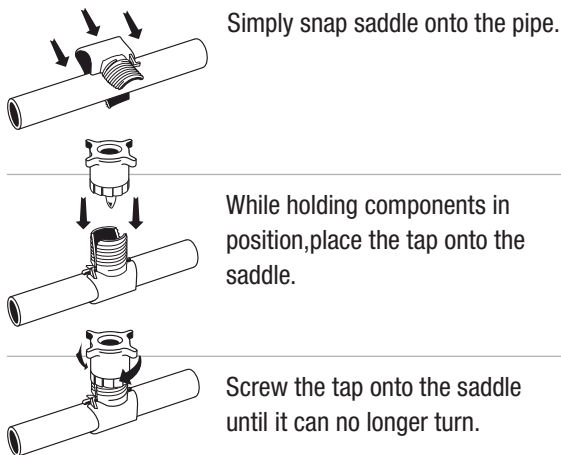
Elbows	
KT007SW-E	3/4" PE x Swing Elbow
KT010SW-E	1" PE x Swing Elbow
KT012SW-E	1 1/4" PE x Swing Elbow
KT015SW-E	1 1/2" PE x Swing Elbow
KT025SW-E	25mm PE x Swing Elbow
KT032SW-E	32mm PE x Swing Elbow

Adapter	
KT007DMA17	3/4" PE x 17mm Male Adapter
KT007SW-S	3/4" PE x Swing Adapter
KT010DMA17	1" PE x 17mm Male Adapter
KT010SW-S	1" PE x Swing Adapter
KT012SW-S	1 1/4" PE x Swing Adapter
KT015SW-S	1 1/2" PE x Swing Adapter
KT025DMA17	25mm PE x 17mm Male Adapter
KT025SW-S	25mm PE x Swing Adapter
KT032DMA17	32mm PE x 17mm Male Adapter
KT032SW-S	32mm PE x Swing Adapter

Pre-Installed Swing/Drip Connections

- No tools, snaps or straps required
- Significantly less flow restriction than inserts
- Installs six times faster than inserts with worm screw clamps
- Superior versatility (remove, move, replace)

Installation Instructions



Specifications	KT007 C and D	H	W	L
Measurements	KT007 C and D KT010 C and D KT012 C and D KT015 C and D KT025 C and D KT032 C and D	2" x 2" x 2 1/2" x 2 1/2" x 2" x 2" x	2 1/2" x 2 1/2" x 2 1/2" x 2 1/2" x 2 1/2" x 2 1/2" x	2 3/4" x 3" x 3 1/4" x 3 1/2" x 2 3/4" x 3" x
Material	Top: Reinforced Nylon	Bottom: ABS		
Lab Tests	Flow Restriction: 41% < standard insert tee	Quick Burst: 392 psi @ 62 seconds	Flow Rate: 13.6 gpm @ 40 psi	Rated 400 psi
Piping Application	KT models designed for 80 and 100 psi HDPE/MDPE pipe.			
Configurations	Pre-Installed Swing or Drip connections			
Install Tools Needed	No Tools Needed			
Manufactured In	USA			

